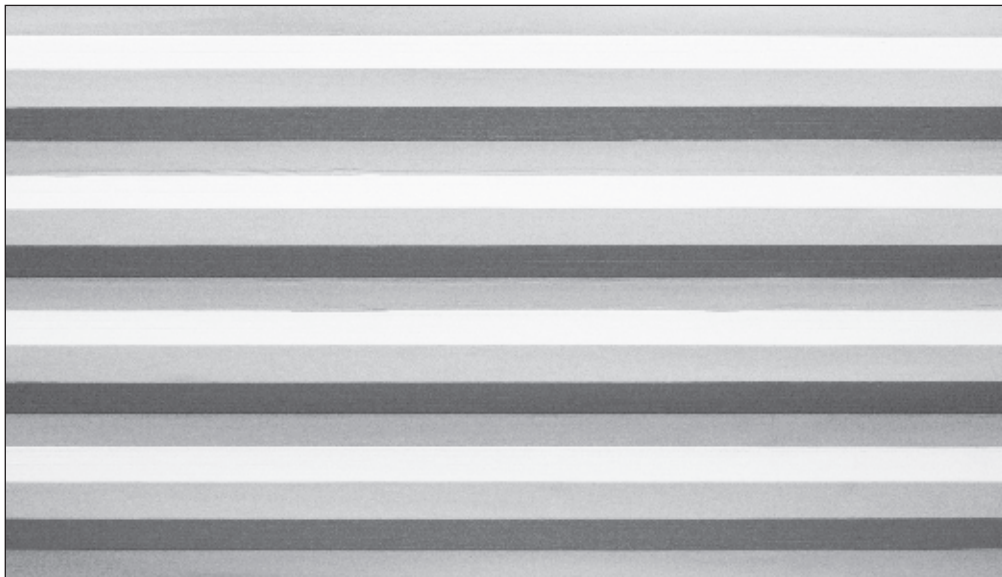


PE 718 Container End
Panel size: 2385mm x 1180mm x 40mm



PE 715 Container Sides 6 Bars
Panel Size 2390mm x 1200mm x 25mm



PE 717 Container Sides 4 Bars
Panel Size 2390mm x 1200mm x 35mm



PE 716 Container Sides 5 Bars
Panel Size 2390mm x 1200mm x 30mm

Standard designs made in vac formed plastic 0.5mm P.V.C., 1.5mm A.B.S. or G.R.P. (glassfibre)