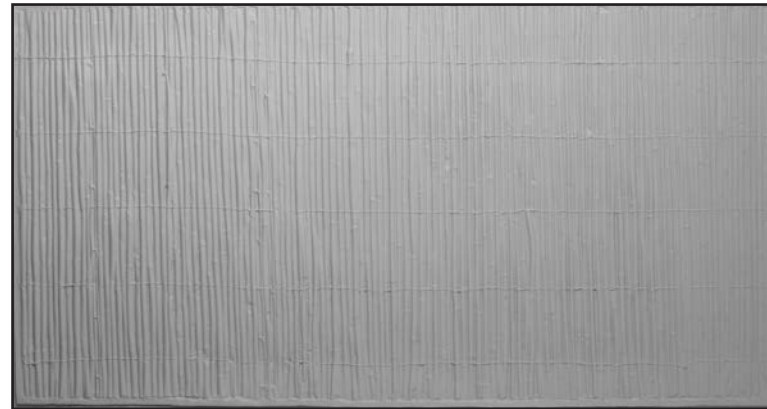




PD 81
Bamboo Surface
 Panel size: 2290mm x 1110mm x 10mm



PD 82
Small Cane
 Panel size: 2170mm x 1150mm x 8mm



PE 5107
Bamboo Surface
 Panel size: 2170mm x 1150mm x 25mm



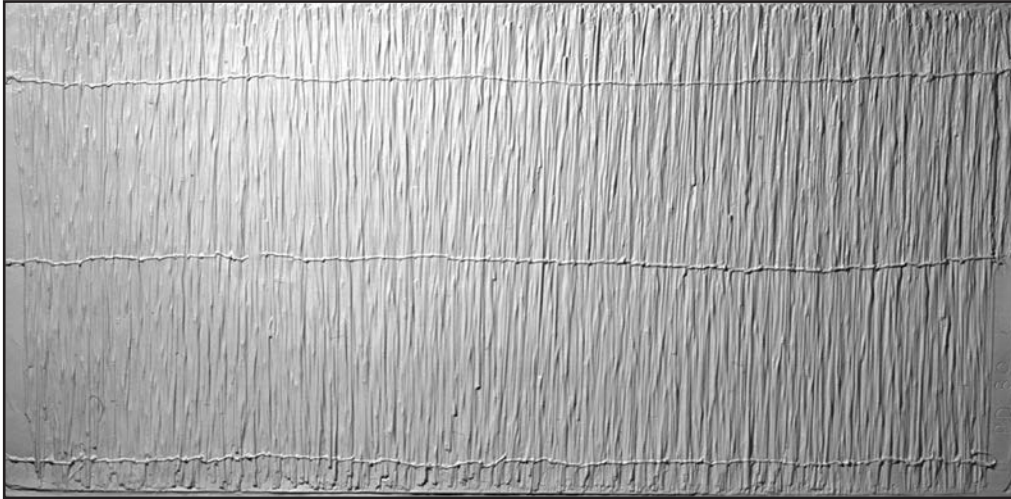
PE 583
Bamboo surface
 Panel size: 1935mm x 1020mm x 20mm



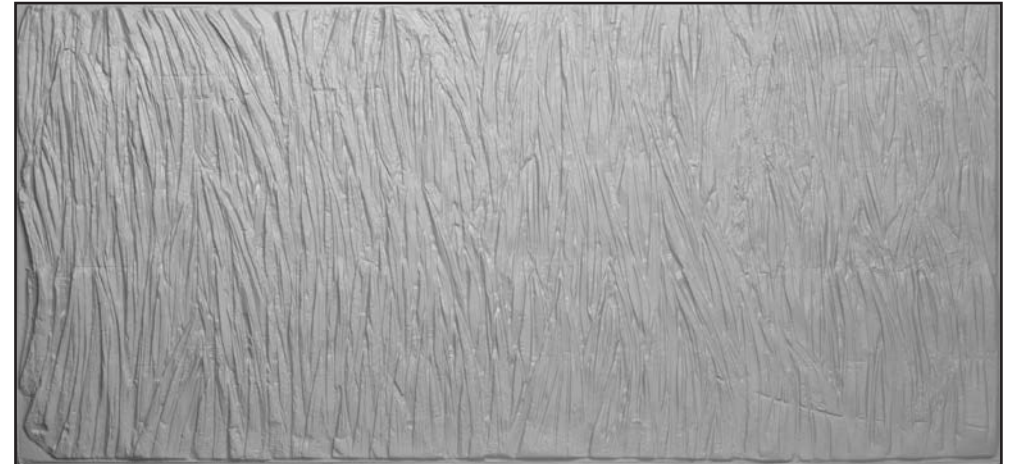
Bamboo Sections
 2350mm x 130mm x 70mm

Two halves can be fixed together ABS

Standard designs made in vac formed plastic 0.5mm P.V.C., 1.5mm A.B.S. or G.R.P. (glassfibre)
 High Strength Plaster backed with hessian scrim for use in pubs and themed areas also available



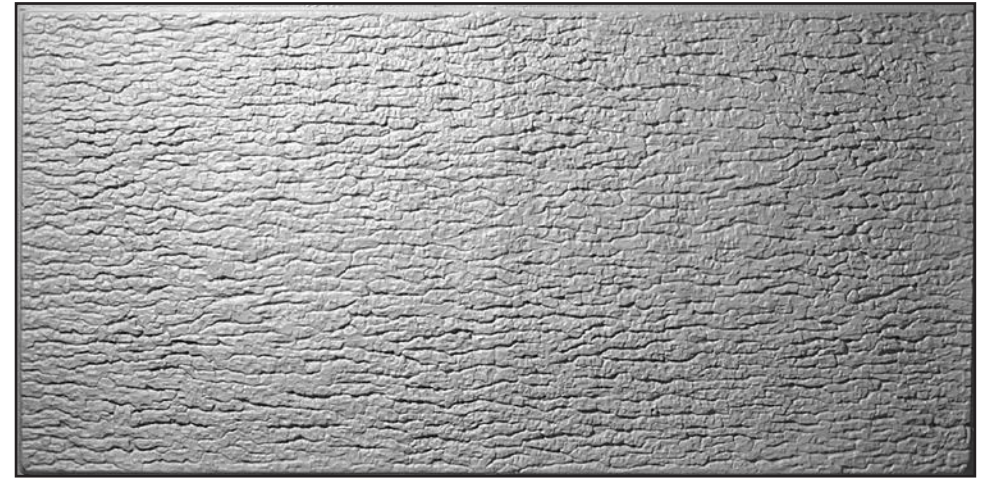
PD 80
Straw thatching
Panel size: 2360mm x 1140mm x 12mm



PD 182A
Straw thatching
Panel size: 2300mm x 1085mm x 20mm
Similar PD 182B Also available

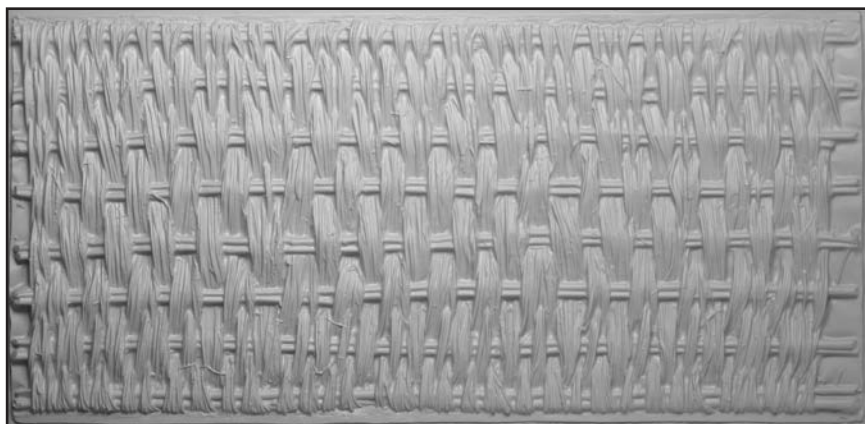


PD 132
Oak tree bark
Panel size: 2300mm x 1090mm x 12mm



G 008
Elm tree bark
Panel size: 2220mm x 1100mm x 8mm

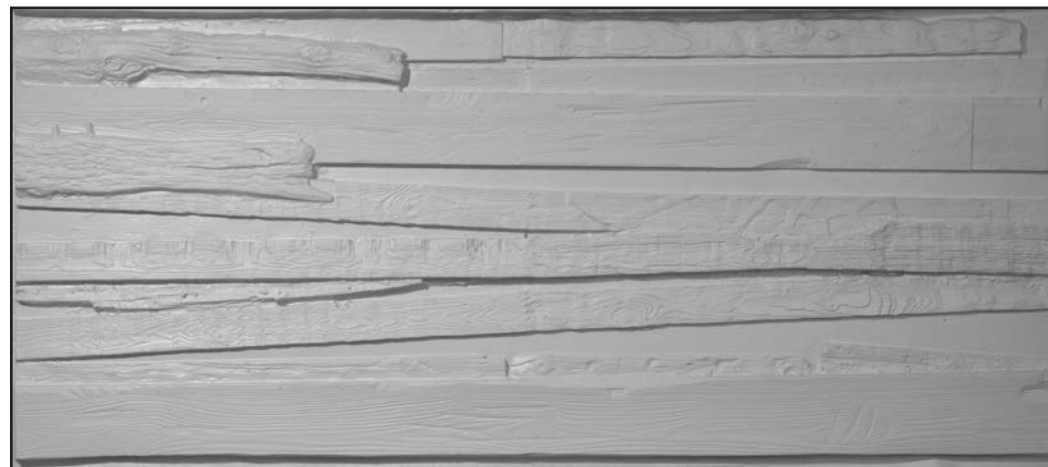
Standard designs made in vac formed plastic 0.5mm P.V.C., 1.5mm A.B.S. or G.R.P. (glassfibre)



PD 186

Wickerwork

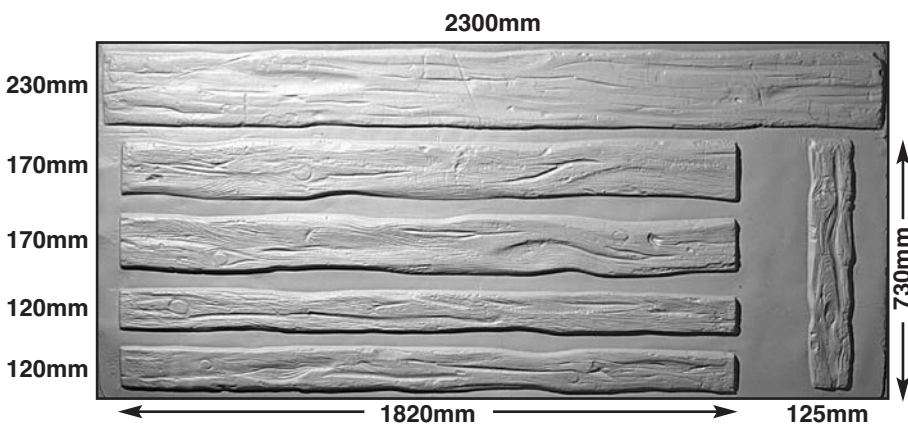
Panel size: 2310mm x 1070mm x 20mm



PE 5102

Rough wooden panel

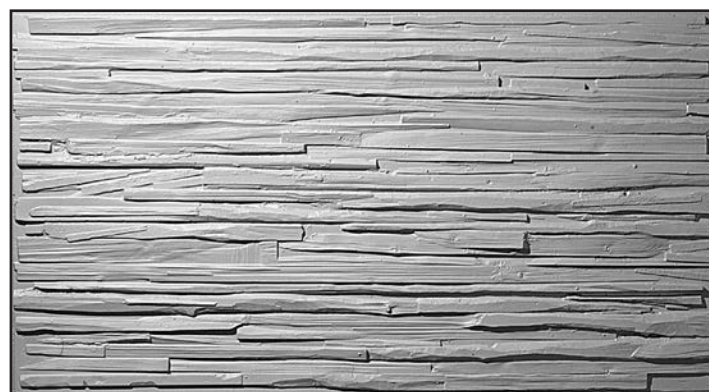
Panel size: 2390mm x 1150mm x 75mm



PD 70

Old wooden beams

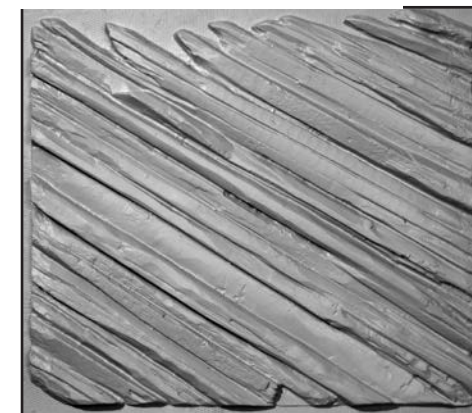
Panel size: 2300mm x 1000mm x 20mm



PE 584

Abstract wood texture

Panel size: 1980mm x 1065mm x 23mm



PE 507 Abstract wooden panel

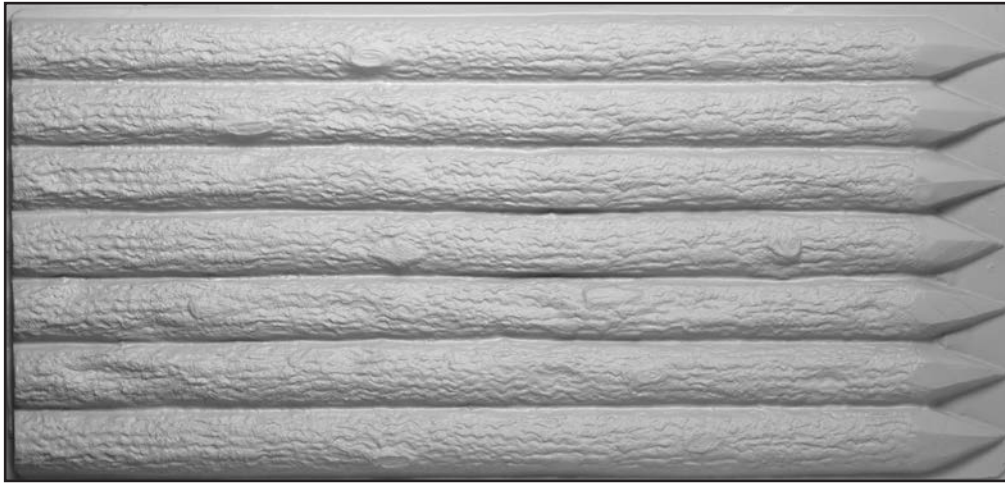
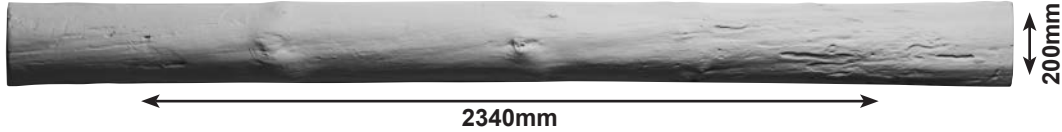
Panel size: 1225mm x 1150mm x 75mm

Standard designs made in vac formed plastic 0.5mm P.V.C., 1.5mm A.B.S. or G.R.P. (glassfibre)

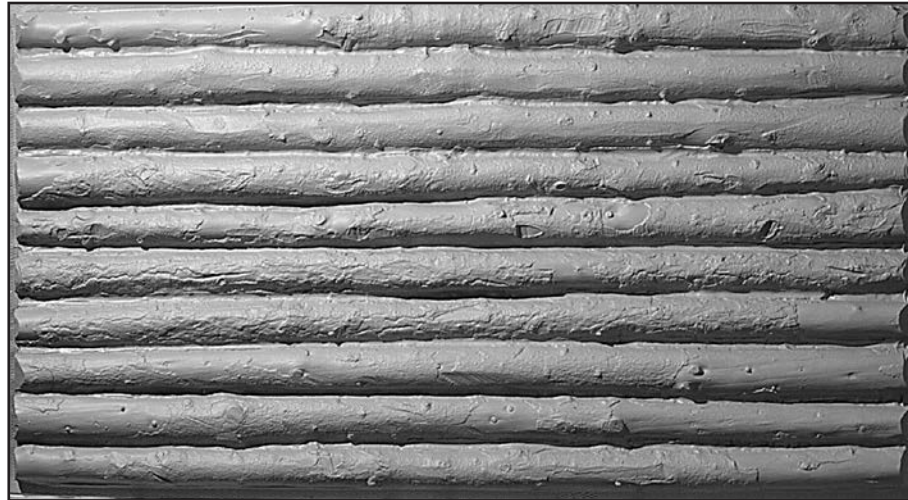
High Strength Plaster backed with hessian scrim for use in pubs and themed areas also available

Logs And Driftwood

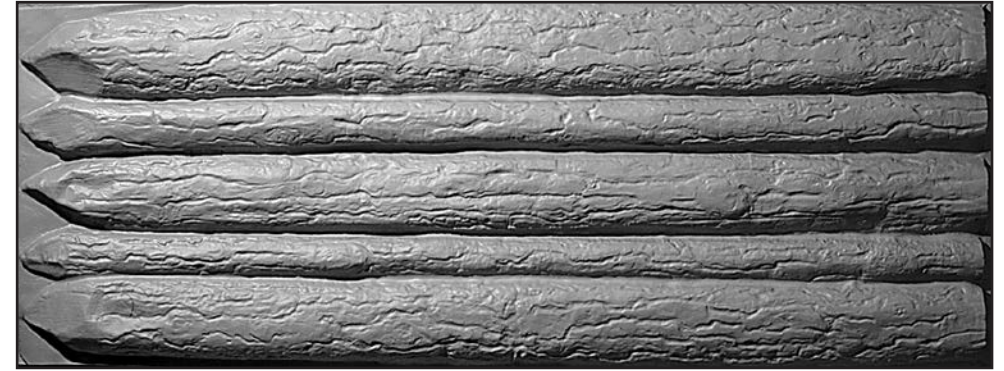
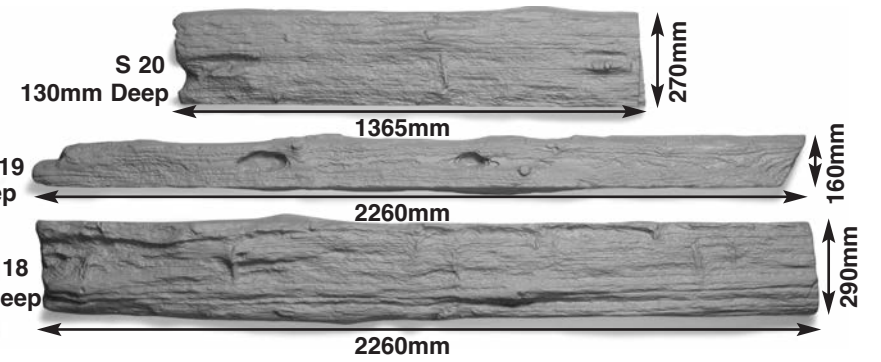
S 16
100mm Deep



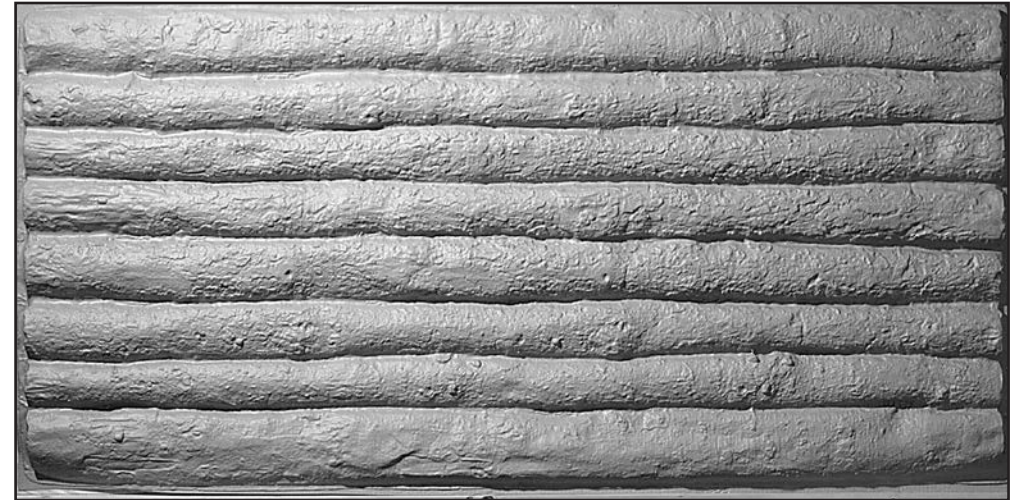
PD 77
Logs: Maximum 150mm diameter
Panel size: 2330mm x 1090mm x 60mm



PE 559
Logs: 100mm diameter
Panel size: 2000mm x 1100mm x 60mm



PD 79
Logs: Maximum 250mm diameter
Panel size: 2300mm x 860mm x 80mm



PD 78
Logs: 150mm diameter
Panel size: 2260mm x 1100mm x 60mm

Standard designs made in vac formed plastic 0.5mm P.V.C., 1.5mm A.B.S. or G.R.P. (glassfibre)



PD 183

Six planks width 180mm
Panel size: 2290mm x 1100mm x 6mm



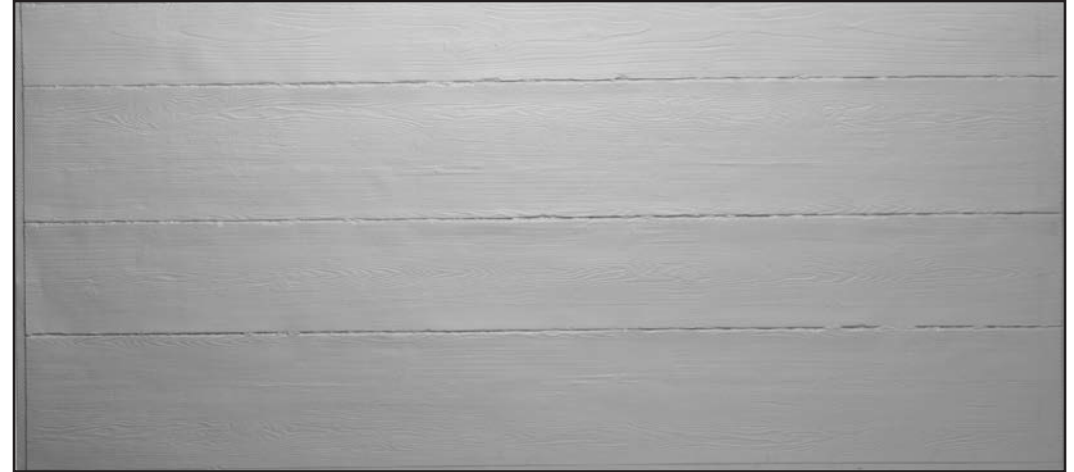
PD 190

Four rough planks width 250mm
Panel size: 2250mm x 1025mm x 15mm



PD 8

Nine planks width 115mm
Panel size: 2300mm x 1040mm x 8mm

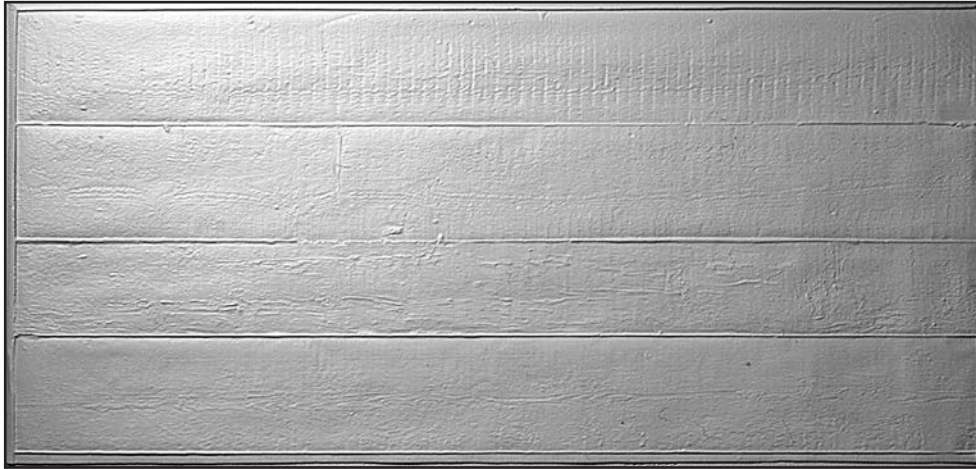


PE 5106

Four smooth planks
Panel size: 2350mm x 1060mm x 4mm

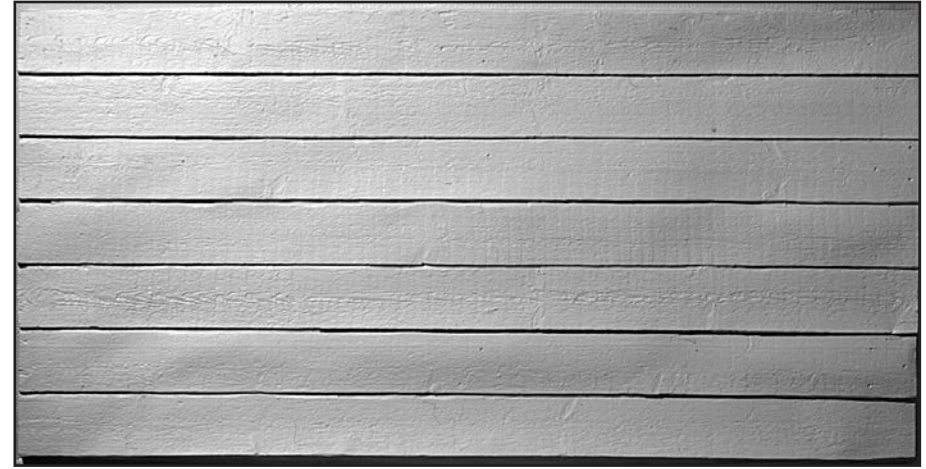
Standard designs made in vac formed plastic 0.5mm P.V.C., 1.5mm A.B.S. or G.R.P. (glassfibre)

Rough Wooden Surfaces



PD 74

Shuttering boards width 275mm approx
Panel size: 2335mm x 1120mm x 5mm



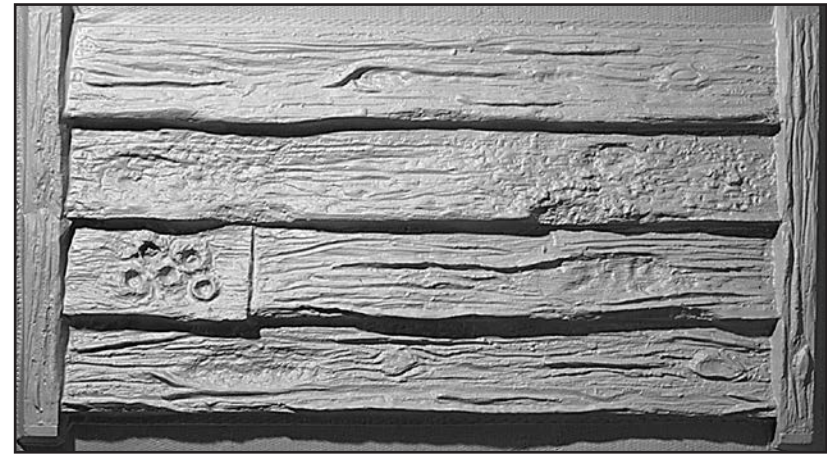
PD 125

Rough overlapping weather boards width 145mm
Panel size: 2310mm x 1030mm x 16mm



PD 26

Heavy grained wood boards
Panel size: 2315mm x 1110mm x 20mm



PD 71

Old worn timber frame
Panel size: 1892mm x 1054mm x 70mm

Standard designs made in vac formed plastic 0.5mm P.V.C., 1.5mm A.B.S. or G.R.P. (glassfibre)



PE 124

Match boarding with flute width 115mm
Panel size: 2390mm x 1165mm x 8mm



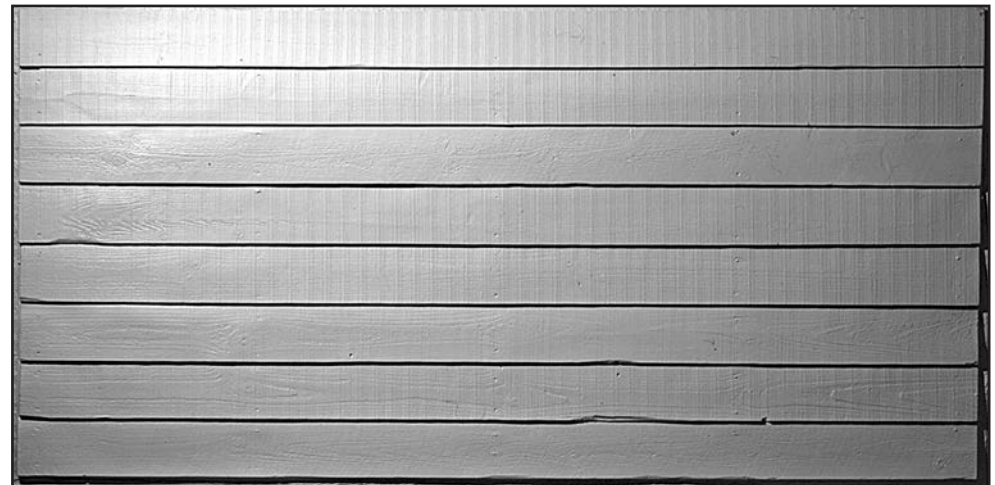
S 52

Beaded match boarding width 88mm
Panel size: 2060mm x 1068mm x 6mm



S 67

Match boarding with bead and flute width 130mm
Panel size: 2135mm x 1055mm x 6mm



PE 558

Overlap weather boarding width 145mm
Panel size: 2400mm x 1170mm x 15mm

Standard designs made in vac formed plastic 0.5mm P.V.C., 1.5mm A.B.S. or G.R.P. (glassfibre)