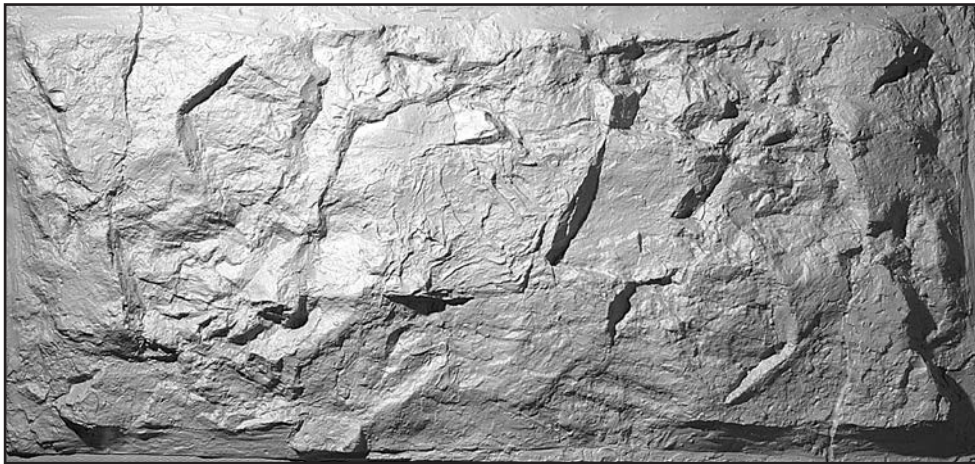


PD 111
Rock face
Panel size: 2200mm x 1150mm x 130mm



PD 130
Rock face
Panel size: 2300mm x 1080mm x 110mm



PD 134
Rock face
Panel size: 2360mm x 1200mm x 100mm



PD 21
Rock face
Panel size: 2330mm x 1140mm x 50mm

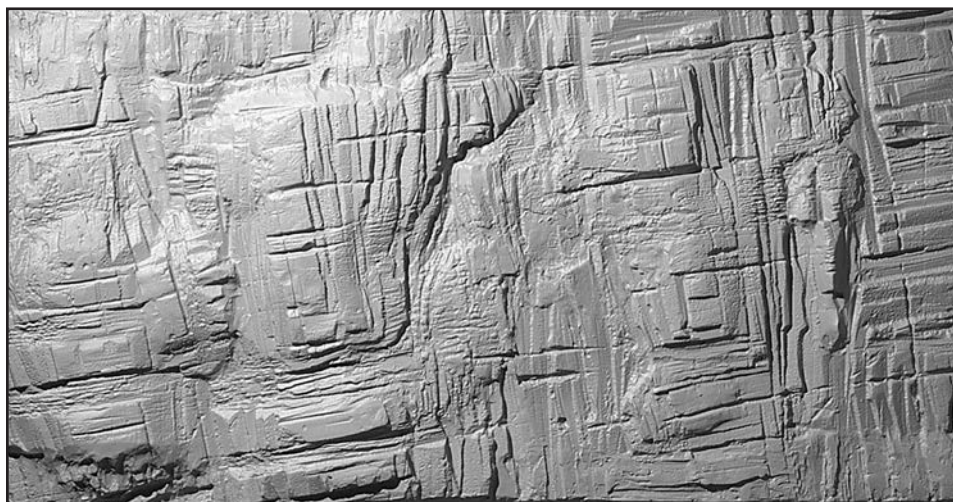
Standard designs made in vac formed plastic 0.5mm P.V.C., 1.5mm A.B.S. or G.R.P. (glassfibre)
High Strength Plaster backed with hessian scrim for use in pubs and themed areas also available



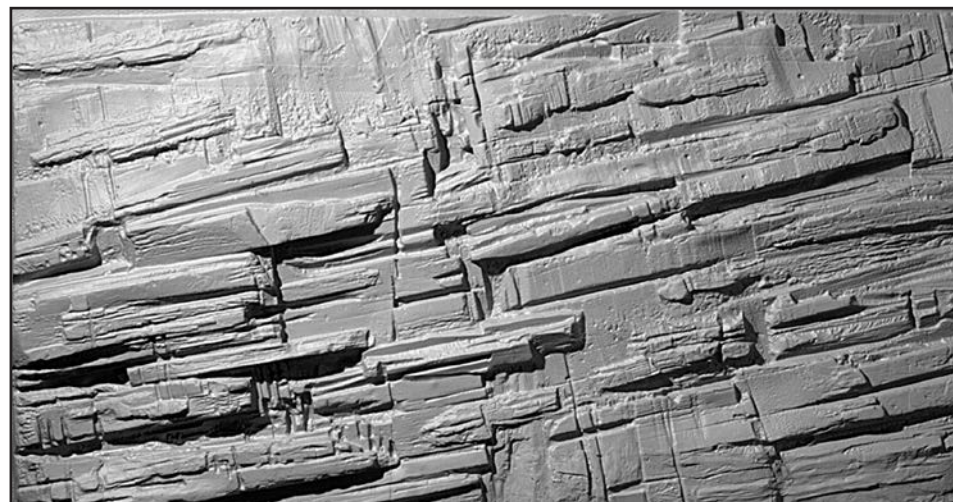
PE 562
Rock face
Panel size: 1960mm x 1130mm x 70mm



PE 563
Rock face
Panel size: 1900mm x 1000mm x 80mm



PE 564
Rock face
Panel size: 1900mm x 1000mm x 80mm



PE 565
Rock face
Panel size: 1960mm x 1130mm x 70mm

Standard designs made in vac formed plastic 0.5mm P.V.C., 1.5mm A.B.S. or G.R.P. (glassfibre)
High Strength Plaster backed with hessian scrim for use in pubs and themed areas also available

Rock Walls



S 91

Random Rock Face
Panel size: 1980mm x 1070mm x 120mm



S 97

Slab Stone Wall
Panel size: 2310mm x 1070mm x 50mm



PD126

Rock Face
Panel Size 2375mm x 1180mm x 80mm



PD 184

Rock Face
Panel size: 2310mm x 1080mm x 50mm

Standard designs made in vac formed plastic 0.5mm P.V.C., 1.5mm A.B.S. or G.R.P. (glassfibre)
High Strength Plaster backed with hessian scrim for use in pubs and themed areas also available